

MARYLAND PARK CONCEPT PLAN

1



PHASE 1
CONCEPT
EXPLORATION

WELCOME!

WHY ARE WE HERE TODAY?

The City of Campbell River is developing a concept for Maryland Park and Palmer Meadows area (270 Maryland Road). The existing park is undeveloped and the neighbourhood is in need of park amenities.

Please join us to share your input and help inform a park concept plan.

PARK CONTEXT

The park is located within the Maryland Estates residential neighbourhood which has grown over the last decade. Maryland Park is on the City's Greenways Loop and provides a connection to Willow Creek Conservation Area.

PLANNING FOR CHANGE

This dedicated parkland presents an opportunity to develop park amenities within walking distance for neighbourhood residents such as improved trails, a playground, and a picnic area.

WHAT IS A PARK CONCEPT PLAN?

A Park Concept Plan is a long-term, strategic document that a community uses to plan, prioritize, and budget for park improvements over time. The Park Concept Plan helps to guide future park upgrades, environmental considerations, and recreational use.

The Park Concept Plan process for Maryland Park was initiated in September 2022 and is planned to be complete by Spring 2023.

How to share your feedback...



TALK WITH US!

Project team members are here today to listen to your thoughts and discuss your ideas.



POST YOUR IDEAS

Add your feedback to a display board for others to see.

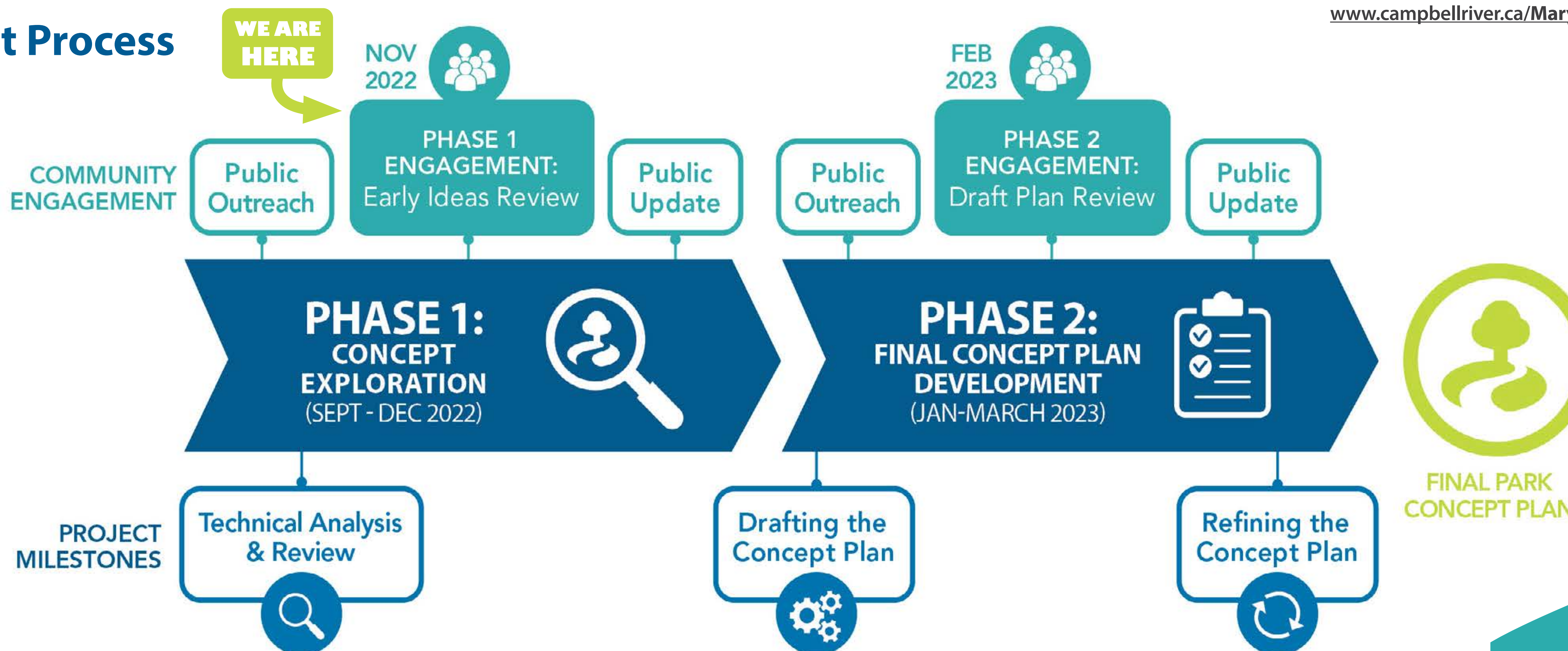


FILL OUT A FEEDBACK FORM

Submit your completed form in the submission box. Forms are also available at the City or online at:

www.campbellriver.ca/Maryland-Park

Project Process



MARYLAND PARK CONCEPT PLAN

2



PHASE 1
CONCEPT
EXPLORATION

EXISTING CONDITIONS



1 PRIMARY DESIRE LINE



2 SECONDARY DESIRE LINE



3 DRAINAGE SWALE (SEASONAL WATER)



4 WEST END OF PARK



5 YOUNG TREES & CLEARED BLACKBERRY



6 PEDESTRIAN CROSSING

MARYLAND PARK CONCEPT PLAN

3



PHASE 1
CONCEPT
EXPLORATION

EARLY IDEAS MAP

Please take a moment to review the ideas here and provide your feedback!

The Early Ideas Map and List have been generated from technical analysis of opportunities and constraints and discussions with City staff. These are preliminary starting points for developing the concept and require your feedback.

Do you have other ideas for the park, or thoughts about where park amenities or improvements are best suited? Please leave a sticky, complete a feedback form, or discuss with a project team member!

Post thoughts or comments on the map!



LEGEND - EARLY IDEAS

- PARK BOUNDARY
- PARK ENTRY
- PROPOSED TREE
- EXISTING TRAIL
- PROPOSED PRIMARY TRAIL
- EXISTING GREENWAYS LOOP
- EXISTING DRAINAGE SWALE (SEASONAL WATER)

EARLY IDEAS LIST

[see next board for descriptions and more information]

FEATURE AMENITIES

- 1 Develop Primary Trails
- 2 Develop a Play Area
- 3 Add a Park Picnic Area
- 4 Provide Flexible Open Space

SUPPORTING AMENITIES

- 5 Integrate Benches and Seating
- 6 Improve Park Entry Signage
- 7 Add Interpretive Signage
- 8 Designate Accessible Parking
- 9 Provide Bicycle Parking
- 10 Add Waste Receptacles
- 11 Add a Footbridge (over the drainage swale)

NATURAL AREAS

- 12 Restore and Enhance Natural Areas
- 13 Manage the Tree Canopy
- 14 Protect Natural Areas



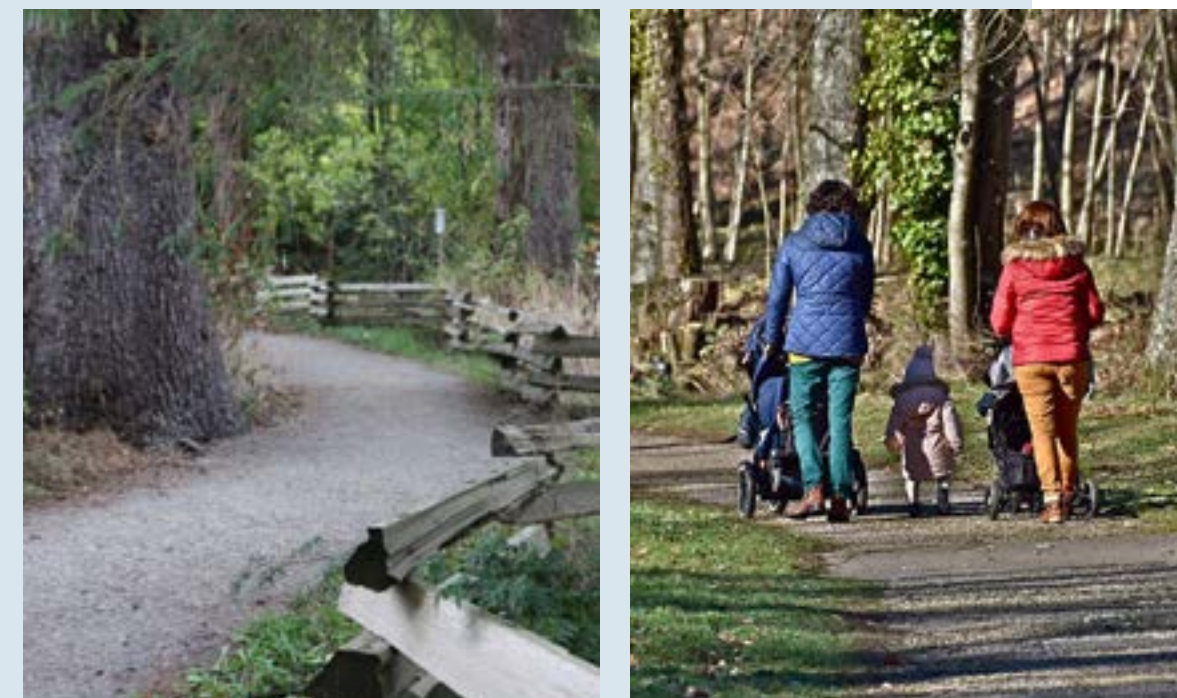
EARLY IDEAS LIST DESCRIPTIONS

These early ideas will be refined based on your feedback and further analysis. The list and numbering below corresponds with the **EARLY IDEAS MAP** on the previous board.

FEATURE AMENITIES

1 DEVELOP PRIMARY TRAILS

- Formalize a primary park trail that is compacted gravel and accessible
- Provide trails to connect the proposed amenities in the park (e.g. play area, picnic area, flexible open spaces)
- Connect the park trail with the Greenways Loop and route to the Willow Creek Conservation Area



2 DEVELOP A PLAY AREA

- Incorporate a variety of play amenities to provide opportunities for children of all ages and abilities
- Consider different features such as slide, climber, spinner, group swing, and/or other play equipment
- Provide accessible connections to the play area, between play equipment, and onto play equipment
- Consider pour-in-place rubber surfacing to provide the best access



3 ADD A PARK PICNIC AREA

- Add accessible picnic tables close to the play area and provide easy trail access from Maryland Road



4 PROVIDE FLEXIBLE OPEN SPACE

- Retain open spaces in the park to support flexible uses (e.g. frisbee, kite flying, soccer)
- Flexible open space can support small neighbourhood gatherings or small events (e.g. a birthday party)
- Provide several different areas within the park for flexible use by multiple visitors at the same time



ACCESS & CIRCULATION

5 INTEGRATE BENCHES AND SEATING

- Provide benches near Maryland Road and Willow Creek Road park entry points and the flexible open space
- Provide benches as well as informal seating around the play area



6 IMPROVE PARK ENTRY SIGNAGE

- Include a primary park sign at Maryland Road, and a secondary entry sign at all other access points



7 ADD INTERPRETIVE SIGNAGE

- Provide an interpretive sign near the Rose Place park entrance about the eagle nest tree story
- Provide an interpretive sign about Palmer Meadows near the main park entry and play area



8 DESIGNATE ACCESSIBLE PARKING

- Dedicate two accessible parking spots on Maryland Road adjacent to the park entry and play area (allocate one spot in each travel direction)



9 PROVIDE BICYCLE PARKING

- Provide bicycle racks for secure bike parking at the Maryland Road entrance in close proximity to the play area



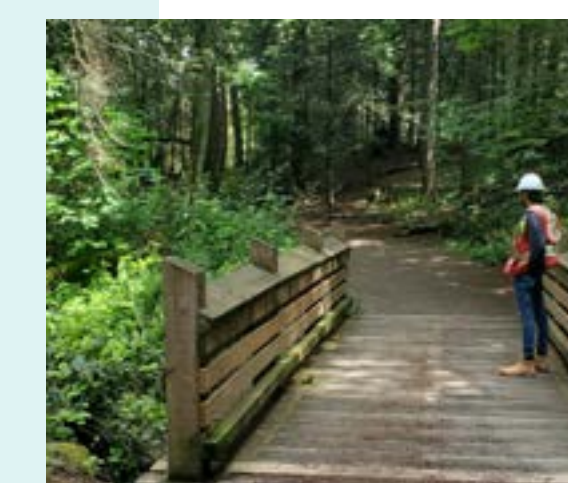
10 ADD WASTE RECEPTACLES

- Provide animal-resistant receptacles at park entries on Maryland Road and Willow Creek Road
- Provide maintenance access and integrate separation of waste and recycling



11 ADD A FOOTBRIDGE OVER THE DRAINAGE SWALE

- Provide a footbridge to access the north side of the park (along the primary trail)
- Provide a footbridge to connect the play area with the east side of the park



NATURAL AREAS

12 RESTORE AND ENHANCE NATURAL AREAS

- Carry out invasive species management in the park with a focus on the area surrounding the registered bald eagle nest tree
- Provide habitat enhancement planting in the areas where invasive species are removed
- Collaborate with neighbours or local community groups to provide ongoing stewardship and management of invasive plant species in the park

13 MANAGE THE TREE CANOPY

- Provide a clear sightline from the trail at the northwest part of the park through to the core park area off of Maryland Road
- Integrate shade tree planting with the park play area and picnic area

14 PROTECT NATURAL AREAS

- Maintain areas of the park as undeveloped and undisturbed to provide natural areas for the mutual benefit of wildlife and the neighbourhood

Do you have other ideas?

Please fill out an input questionnaire!
Open now through December 8.

campbellriver.ca/Maryland-Park

